



**Launceston to New Norfolk cycling classic**  
 SUNDAY, SEPTEMBER 27, 2009

**START 9.00 AM                      DISTANCE: 209.7KMS**

**NO.    KMS.**

1.    0.0                      **RACE START: Country Club Tasmania – under Main Entrance Archway, facing steps.**

**RACE UNDER CONTROL**

- 2.    0.1                      **Veer Left** at Driveway fork
- 3.    0.15                     Pass Carpark entrance – **Veer Right**                      SCOUT  
 CAUTION – TRAFFIC ISLANDS
- 4.    0.6                      Pass Casino Rise – Villas turn off                      SCOUT
- 5.    1.1                      Pass Cheltenham Way – TRAFFIC ISLANDS                      SCOUT
- 6.    1.3                      Pass St Andrews Cl
- 7.    1.4                      Pass Sherwood Cl                      SCOUT
- 8.    1.7                      Pass Las Vegas Drv                      SCOUT
- 9.    2.0                      T-INTERSECTION – ROUNDABOUT  
**Right** into Westbury Rd                      POLICE/SCOUT
- 10.   2.1                     Pass Donalds Ave                      SCOUT
- 11.   2.3                     Pass Westbury Rd North                      SCOUT
- 12.   2.5                     Pass Launceston – Hobart turn off
- 13.   2.7                     JUNCTION – ROUNDABOUT  
**Right** to Longford & Hadspen on Meander Valley Hwy                      POLICE/SCOUT
- 14.   3.5                     Pass Coates Rd                      SCOUT
- 15.   4.7                     Travellers Rest Sign

**RACE COMMENCES**

- 16.   5.6                     JUNCTION – ROUNDABOUT  
**Veer left** to Longford on Pateena Rd                      SCOUT
- 17.   5.65                    Pass Burnetts Rd                      **CAT 4**
- 18.   6.4                      **HILL CLIMB STARTS**  
 70KM speed sign on left and stone wall  
**HILL CLIMB ENDS**
- 19.   7.1                      **Northern Midlands Council Sign**
- 20.   9.5                      Pass Sheridan Crt                      SCOUT
- 21.   10.5                    Pass Norwich Drv                      SCOUT
- 22.   11.1                    Brick Bridge
- 23.   11.4                    Pass Esk Lynn Rd                      SCOUT
- 24.   11.7                    **PATEENA - CREAM HOUSE ON LEFT**                      **SPRINT**

**Tas Gas Launceston to New Norfolk continued....**

25.	14.1	Pass Arrandale Rd	SCOUT
26.	15.7	T-INTERSECTION <b>Right</b> to Longford & Burnie (B52)	POLICE/SCOUT
27.	18.2	BRIDGE	
28.	18.4	SOUTH ESK RIVER	
29.	18.9	BRIDGE	
30.	19.0	CAUTION TRAFFIC ISLANDS – JUNCTION <b>Left</b> to Longford	POLICE/SCOUT
31.	19.3	<b>Longford Town Sign</b>	
32.	19.5	CAUTION – Railway Crossing	
33.	19.7	Cross Union St	SCOUT X 2
34.	19.9	Pass Mason St	SCOUT
35.	20.0	Cross Smith St	SCOUT
36.	20.1	<b>OLD MILL CAFÉ AND JJ'S BAKERY</b>	<b>SPRINT</b>
37.	20.2	Cross Archer St	
38.	20.3	Pass Lyttleton St – CAUTION – Traffic Islands	SCOUT
39.	20.4	Cross William and Wellington Sts - <b>Veer Right</b>	SCOUT/POLICE
40.	20.8	Cross High St	SCOUT
41.	21.0	Cross Pultney St	SCOUT
42.	21.3	Cross Malcombe St	SCOUT
43.	21.5	Cross Hobhouse St	SCOUT
44.	21.7	Cross Bulwer St	SCOUT
45.	21.8	Pass Lewis St	SCOUT
46.	21.9	<b>Veer Right</b> to Poatina	
47.	22.1	Pass Talbot St	SCOUT
48.	22.2	Cross Craycroft St	SCOUT
49.	22.8	Pass Brickendon St	SCOUT
50.	23.1	Pass Catherine St	
51.	23.2	<b>AUSTRAL BRICKS</b>	<b>SPRINT</b>
		Cross Bishopsbourne turn off and Weston St	SCOUT
52.	23.8	Pass Peel St	
53.	25.0	Cross Cotton St	
54.	26.1	Pass Longford Golf Course Turn-off	SCOUT
55.	27.4	Pass Freeland Ln	
56.	29.9	Pass Green Rises Rd	
57.	30.1	CRESSY TOWN SIGN	
58.	30.6	Pass Jeston Court Stock Route	
59.	30.7	Pass William St	SCOUT
60.	30.8	Pass Wilson St	SCOUT
61.	31.0	Pass Macquarie St	SCOUT
62.	31.3	Cross Spencers Ln and King St	SCOUT
63.	31.4	<b>RINGWOOD HOTEL</b>	<b>SPRINT</b>
64.	31.6	Pass Church St	SCOUT
65.	31.9	Cross Saundridge Rd and Ephinstone Rd CRESSY PRIMARY SCHOOL	SCOUT
66.	33.3	Pass Woodburn Lane	SCOUT

**Tas Gas Launceston to New Norfolk continued....**

67.	34.5	Brumby's Creek Bridge	
68.	35.5	Pass Powranna Rd	SCOUT
69.	39.8	<b>Right</b> to Poatina & Highland Lakes on Woodside Rd	SCOUT
70.	46.1	<b>Veer Right.</b> Pass Billop Rd	SCOUT
71.	47.2	Bridge	
72.	49.9	<b>Veer Left</b> to Poatina, Pass Saundridge Rd	SCOUT
73.	50.0	Pass Merging Traffic Lane	
74.	50.8	Pass Palmerston Switchyard	
75.	52.9	Poatina Resort Village Sign	
		<b><u>HILL CLIMB STARTS</u></b>	<b><u>CAT 4</u></b>
76.	54.9	Poatina Restaurant Sign	
		<b><u>HILLCLIMB ENDS</u></b>	
77.	55.2	<b>POATINA VILLAGE Turn-off.</b>	
<b>FEED STATION 1 – Parking in Poatina Resort Village</b>			
		Keep Straight	SCOUT
78.	58.0	Pass Poatina Power Station Turn-off	SCOUT
79.	59.0	Pass 2 <sup>nd</sup> Power Station Turn-off	SCOUT
		<b><u>HILL CLIMB STARTS</u></b>	<b><u>CAT 1</u></b>
80.	66.4	Pass unmade road on left ( <i>photo opportunity</i> )	
81.	69.1	Central Highlands Council Sign	
82.	69.7	<b>HIGH VOLTAGE POLES &amp; CLEARING ON RIGHT</b>	
		<b><u>HILL CLIMB ENDS – King of Poatina</u></b>	
83.	71.7	Pass Great Lane	
84.	76.1	Boat Ramp Turn-off	SCOUT
85.	86.4	Pass Jonah Bay turn off	
86.	86.6	Pass Gunns Marsh Rd	SCOUT
87.	90.7	<b>PUMPHOUSE BAY CAMPING GROUND</b>	<b>SPRINT</b>
88.	92.2	<b>ARTHURS LAKE TURN OFF</b> (Arthur's Rd)	<b>SPRINT</b>
89.	96.6	T-INTERSECTION	
		<b>Left</b> to Bothwell, Melton and Mowbray	SCOUT
90.	99.8	Ripple Creek	
91.	100.6	<b>ST PATRICK PLAINS SIGN</b>	<b>SPRINT</b>
92.	101.4	St Patrick Creek	
93.	102.8	Jacks Creek	
94.	106.9	Steppes State Reserve	
95.	107.0	<b>STEPPE HOMESTEAD</b>	<b>SPRINT</b>
96.	107.1	Pass Interlaken Rd	SCOUT
97.	107.3	Pass Interlaken, Oatlands turn off	SCOUT
98.	107.8	Steppes Sculptures	
99.	110.2	BAKERS TIER SIGN – <u>Descent Starts</u>	
100.	112.3	Gravel Rd on right – <u>Decent Ends</u>	
101.	115.5	Blackburn Creek ( <i>photo opportunity at 119.4kms</i> )	
102.	121.2	<b>HUNTERSTON</b>	<b>SPRINT</b>
103.	121.9	Bridge – <b><u>HILL CLIMB STARTS</u></b>	<b><u>CAT 4</u></b>

**Tas Gas Launceston to New Norfolk continued....**

104.	123.6	Clearing on left facing Tassie Tiger Painting <b><u>HILL CLIMB ENDS</u></b>	
105.	127.6	Pass Waddamana turn off, Waddamana Rd	SCOUT
106.	138.6	Pass Nant Distillery, Nant Lane	
107.	142.2	Pass Ouse turn off, Wentworth St	
108.	142.3	<b>BOTHWELL TOWN SIGN</b>	
109.	142.4	Clyde River Bridge	
119.	142.7	Pass Elizabeth St	SCOUT
111.	142.8	Pass Alexander St	
112.	142.9	<b>BOTHWELL FIRE STATION</b>	<b>SPRINT</b>
113.	143.2	Cross Arthur & Dalrymple St	SCOUT

**FEED STATION 2 – parking on wide shoulders**

114.	143.3	Pass Queen St	SCOUT
115.	143.4	<b>Right</b> into William St to Hamilton	SCOUT
116.	143.5	Cross High St	SCOUT
117.	143.7	Pass Franklin St and Football Ground	SCOUT
118.	151.8	Berridale Sign	
119.	156.6	1290 Homestead – <b><u>HILL CLIMB STARTS</u></b>	<b><u>CAT 3</u></b>
120.	157.7	Pass Green Valley Rd	
121.	162.6	Clearing on left (hill on right) <b><u>HILL CLIMB ENDS</u></b>	
122.	164.9	HOLLOW TREE TOWN SIGN	
123.	165.1	Bridge	
124.	165.4	Pass South Rd	SCOUT
125.	165.6	<b>HOMESTEAD IN RIGHT Paddock</b>	<b>SPRINT</b>
126.	170.0	65km Sight on left - <b><u>HILL CLIMB STARTS</u></b>	<b><u>CAT 4</u></b>
127.	172.1	Stone walls on left – <b><u>HILL CLIMB ENDS</u></b>	
128.	172.6	T-INTERSECTION <b>Left</b> to New Norfolk and Hobart	SCOUT/POLICE
129.	173.3	Pass Hamilton Plains	SCOUT
130.	173.5	Pass Elderslie turn off	SCOUT
131.	186.0	Pass Marked Tree Rd (Hollow Tree turn off)	SCOUT
132.	187.1	Pass Bluff Rd and Broadmarsh turn off	SCOUT
133.	187.6	Pass Woolpack Rd	SCOUT
134.	188.2	Pass Church Rd	SCOUT
135.	188.8	Pass Clarendon Rd	
136.	189.4	GRETNA TOWN SIGN – Enter Derwent Valley Council	
137.	189.7	<b>GRETNA GREEN HOTEL</b>	<b>SPRINT</b>
138.	190.8	Something Wild Wildlife Sanctuary Sign	
139.	191.1	Mt Field National Park turn off <b><u>HILL CLIMB STARTS</u></b>	SCOUT <b><u>CAT 4</u></b>

**Tas Gas Launceston to New Norfolk continued....**

140.	191.2	ROSEGARLAND TOWN SIGN	
141.	192.0	Lyal High Motors on left – <b><u>HILL CLIMB ENDS</u></b>	
142.	199.6	“Slateford”	
143.	200.5	Unnamed Rd	SCOUT
144.	201.6	<b>HAYES TOWN SIGN</b>	<b>SPRINT</b>
145.	201.8	Pass Kilderry Rd	SCOUT
146.	202.8	<b>CAUTION – Rail crossing – HAZARDOUS ANGLE</b>	SCOUT
147.	204.5	LAWITTA	
148.	204.7	<b>CAUTION – Rail crossing – HAZARDOUS ANGLE</b>	SCOUT
149.	205.0	Pass Lawitta Rd	SCOUT
150.	205.5	Pass Goldsmith St	SCOUT
151.	205.9	Pass Oakdale Rd	SCOUT
152.	206.1	NEW NORFOLK TOWN SIGN	
153.	206.2	<b>CAUTION – Rail crossing – HAZARDOUS ANGLE</b>	SCOUT
154.	207.4	Pass Back River Rd (Magra turn off) CAUTION – TRAFFIC ISLANDS	SCOUT
155.	207.5	JUNCTION – CAUTION – traffic islands <b>Right</b> to Town Centre	POLICE SCOUT X 2
156.	207.6	DERWENT RIVER BRIDGE	
157.	207.8	JUNCTION – ROUNDABOUT – <b>Left</b> into Montague St to Hobart	SCOUT&POLICE
158.	208.0	Pass Bridge St	SCOUT
159.	208.1	Pass Officer St	SCOUT
160.	208.2	Pass Burnett St & Bush Inn Car Park	SCOUT X 2
161.	208.3	ROAD FORK – <b>Keep Right</b>	SCOUT
162.	208.7	Pass Alfred St	SCOUT
163.	208.9	ROUNDABOUT – Right into Pioneer Ave <b>POLICE TO DIRECT RIDERS TO RIGHT HAND SIDE OF ROUNDABOUT</b>	SCOUT&POLICE
164.	209.1	Pass Alfred St	SCOUT
165.	209.2	<b>Left</b> into Bathurst St	SCOUT
166.	209.3	<b>Right</b> into High St	SCOUT
167.	209.5	Cross Stephen St	SCOUT
168.	209.6	Pass one way lane and Charles St	SCOUT
169.	209.7	<b>RACE FINISH: HIGH ST, OPPOSITE NEW NORFOLK POST OFFICE</b> (on cobbled walk way section).	

**APPROXIMATE FINISH TIME: 2 PM**

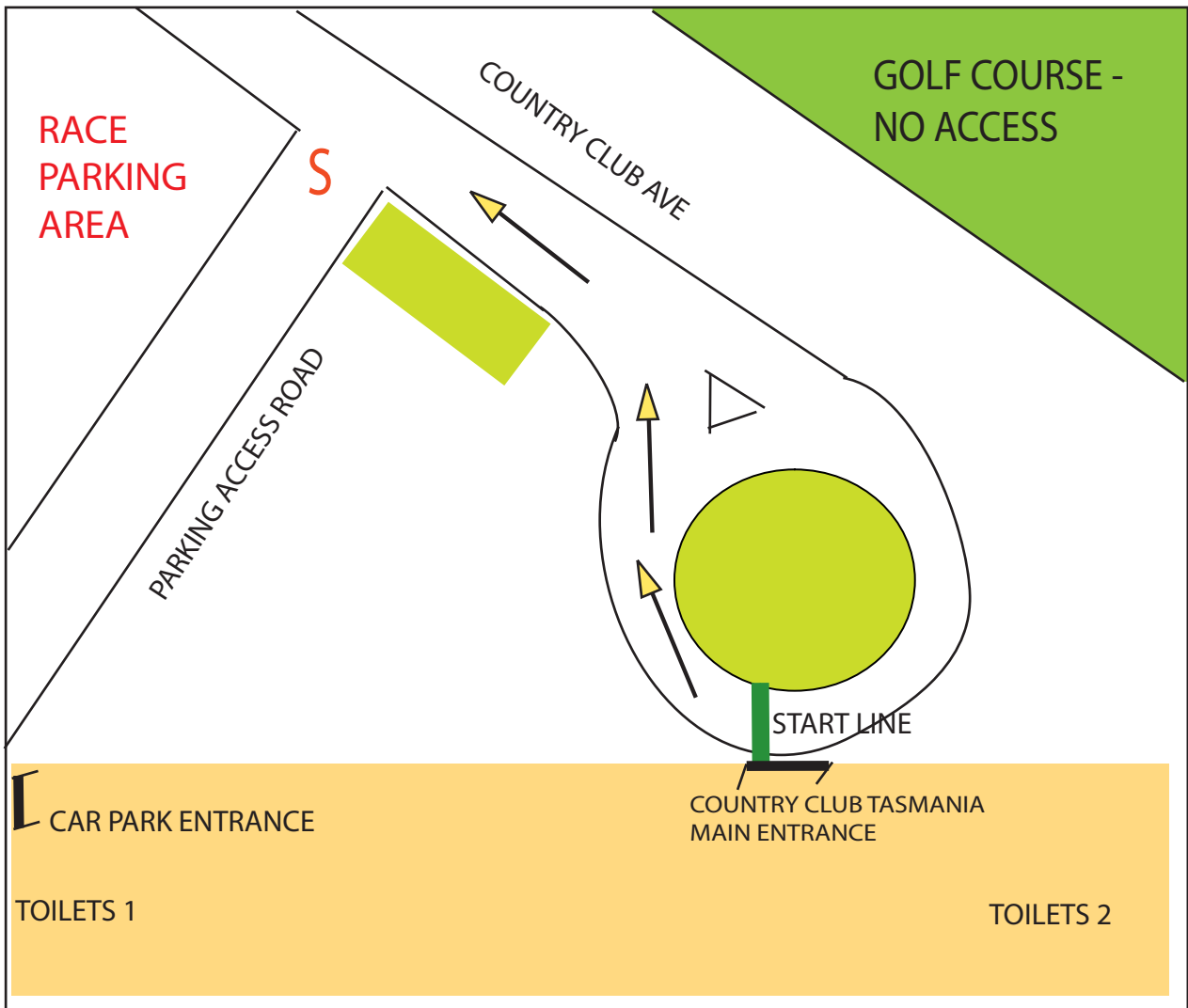
**TOTAL NUMBER OF INTERMEDIATE SPRINTS: 13**

**TOTAL NUMBER OF HILL CLIMBS: 7**

# Tas Gas Launceston to New Norfolk Classic

SUNDAY, SEPTEMBER 27, 2009

**START: COUNTRY CLUB TASMANIA**

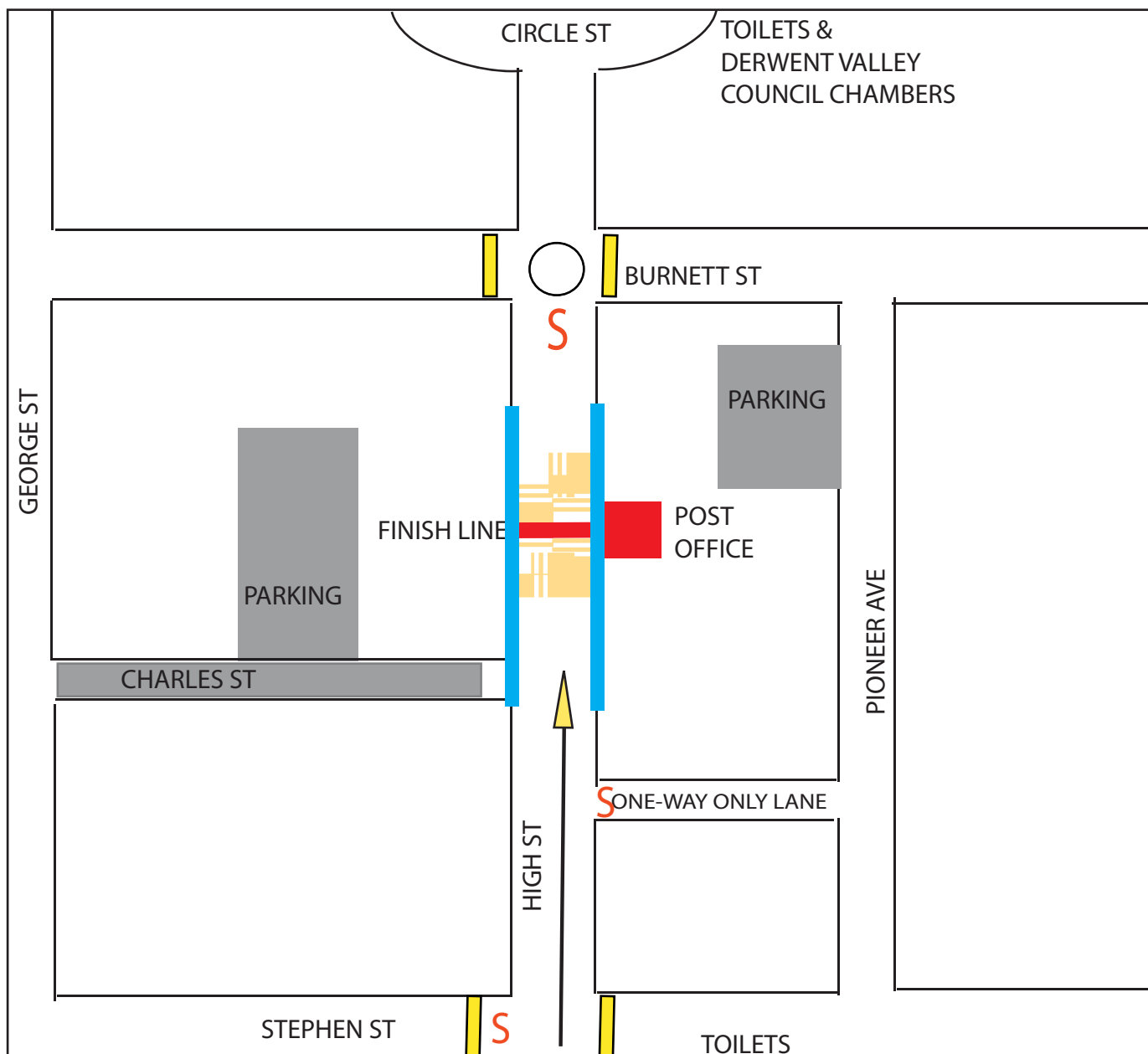






- S TRAFFIC SCOUT
- RACE DIRECTION

# Tas Gas Launceston to New Norfolk Classic

## SUNDAY, SEPTEMBER 27, 2009

### FINISH: NEW NORFOLK - DERWENT VALLEY



-  TRAFFIC SCOUT
  -  RACE DIRECTION
  -  COBBLED TILE SECTION
  -  ROAD CLOSURE BARRICADING (DERWENT VALLEY COUNCIL)
- RACE PARKING IN CHARLES ST, AND DESIGNATED AREAS ABOVE**